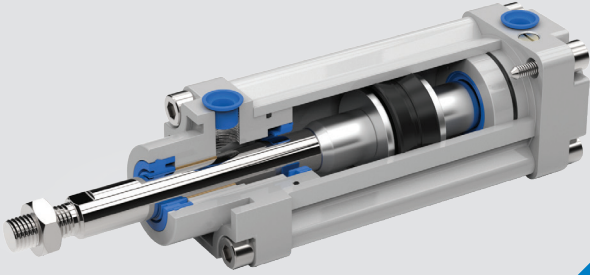


# Cetop Pnömatik Alüminyum Gövde Silindir

## Aluminium Body Cylinder

CETOP RP 43P PAG



### Çalışma Sıcaklığına Göre Keçe Sistemi Seal Choice Depending on the Working Temperature

|  |                    |                                |
|--|--------------------|--------------------------------|
| <b>Poliüretan (PU)</b><br><b>Polyurethane (PU)</b> | (-20°C) - (+80°C)  | Standart Ürün<br>Standard Seal |
| <b>Viton (FKM)</b><br><b>Viton (FKM)</b>           | (-30°C) - (+180°C) | Opsiyon Ürün<br>Optional Seal  |

| Kod / Code | Sembol / Symbol | Model   | Açıklama / Description   |
|------------|-----------------|---|--|
| PAG        |                 | Standart Silindir<br>Standard Cylinder                            | Yastıklamalı Çift Etkili Silindir<br>Double Acting   |
| PAGC       |                 | Çift Millî Silindir<br>Double Rod Cylinder                        | Yastıklamalı Çift Millî Çift Etkili<br>Double Rod, Double Acting                                       |
| PAGT       |                 | Tandem Silindir<br>Tandem Cylinder                                | Yastıklamalı Tek Strokluk Tek Millî Çift Etkili Silindir<br>Single Stroke, Single Rod, Double Acting   |
| PAGD       |                 | İki Pozisyonlu Tandem Silindir<br>Double Position Tandem Cylinder | Yastıklamalı Çift Strokluk Çift Millî Çift Etkili Silindir<br>Double Stroke, Double Rod, Double Acting |

Not: Tandem Silindirde kuvvet iki kat artar. / Note: Using tandem cylinder doubles cylinder power.

| Kod Code | Sembol / Symbol | Model   | Açıklama / Description   |
|----------|-----------------|---|--|
| PAGY     |                 | Standart Silindir<br>Standard Cylinder                            | Çift Etkili Silindir<br>Cushion, Double Acting   |
| PAGYC    |                 | Çift Millî Silindir<br>Double Rod Cylinder                        | Çift Millî Çift Etkili<br>Cushion, Double Rod, Double Acting                                       |
| PAGYT    |                 | Tandem Silindir<br>Tandem Cylinder                                | Tek Strokluk Tek Millî Çift Etkili Silindir<br>Cushion, Single Stroke, Single Rod, Double Acting   |
| PAGYD    |                 | İki Pozisyonlu Tandem Silindir<br>Double Position Tandem Cylinder | Çift Strokluk Çift Millî Çift Etkili Silindir<br>Cushion, Double Stroke, Double Rod, Double Acting |

Not: Tandem Silindirde kuvvet iki kat artar. / Note: Using tandem cylinder doubles cylinder power.

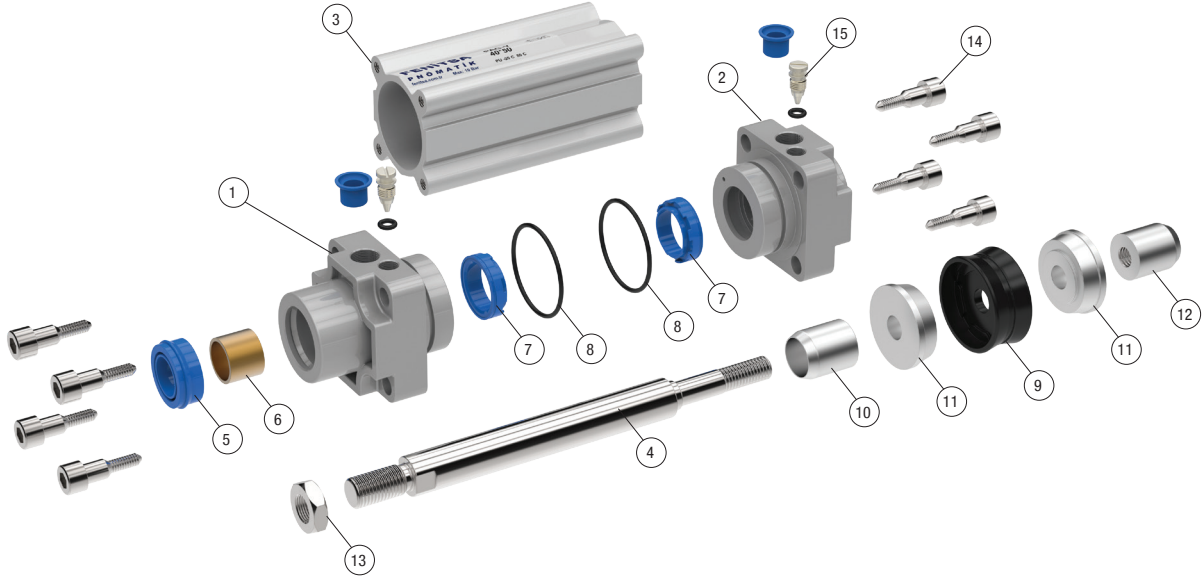
| Silindir<br>Cylinder<br>(Ø mm) | Mil<br>Rod<br>(Ø mm) | İtme Kuvveti (kg)<br>Thrust Force (kg)<br>(6 Bar) | Çekme Kuvveti (kg)<br>Traction Force (kg)<br>(6 Bar) |
|--------------------------------|----------------------|---|--|
| 32                             | 12                   | 48  | 41   |
| 40                             | 16                   | 75  | 63   |
| 50                             | 20                   | 118   | 99   |
| 63                             | 20                   | 187   | 168  |
| 80                             | 25                   | 301   | 272  |
| 100                            | 25                   | 471   | 441  |

1kg: 10 Newton

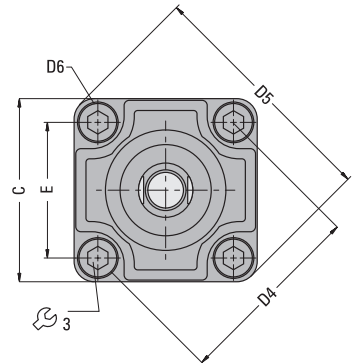
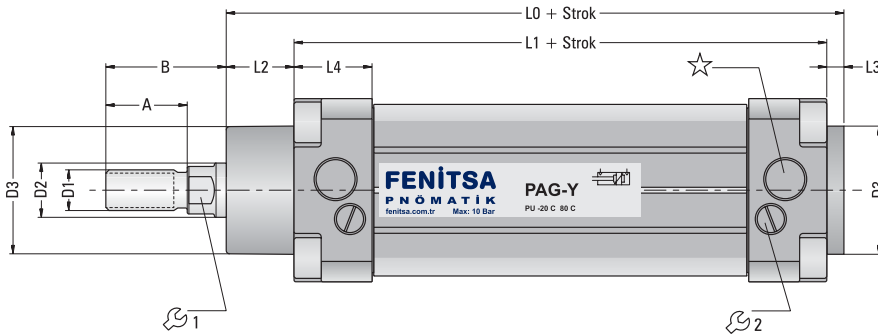
### Genel Özellikler / General Features

|   |  |
|---|--|
| <b>Çalışma Şartı</b><br>Working Condition     | Filtre edilmiş ve yağlı hava ile çalışır.<br>Works with filtered and lubricated oil. |
| <b>Çalışma Basıncı</b><br>Working Pressure    | 1.5 / 10 Bar   |
| <b>Silindir Çapları (mm)</b><br>Diameter (mm) | Ø32-Ø40-Ø50-Ø63-Ø80-Ø100   |
| <b>Strok (mm)</b><br>Stroke (mm)              | 50-100-125-160-200-250-300-350-400-450-500   |

İstenilen strokta üretim yapılmaktadır./We produce at desired stroke..

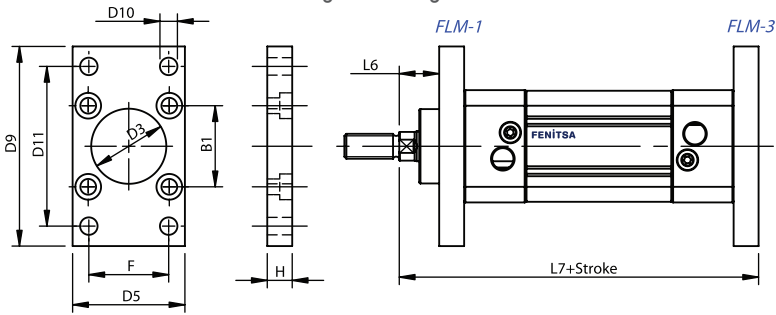


| No | Parça Adı / Product Name     | Adet/pcs | No | Parça Adı / Product Name          | Adet/pcs | No | Parça Adı / Product Name              | Adet/pcs |
|----|------------------------------|----------|----|-----------------------------------|----------|----|---------------------------------------|----------|
| 1  | Ön Kapak<br>Front End Cover  | 1        | 6  | Yataklama Burcu<br>Guiding Band   | 1        | 11 | Piston Keçesi Pulu<br>Piston Seal Nut | 2        |
| 2  | Arka Kapak<br>Rear End Cover | 1        | 7  | Yastıklama Keçesi<br>Cushion Seal | 2        | 12 | Yastıklama Somunu<br>Cushion Nut      | 1        |
| 3  | Boru<br>Tube                 | 1        | 8  | Kapak O-ringi<br>Cover O-Ring     | 2        | 13 | Mil Ucu Somunu<br>Rod Nut             | 1        |
| 4  | Piston Mili<br>Piston Rod    | 1        | 9  | Piston Keçesi<br>Piston Seal      | 1        | 14 | Kapak Cıvatası<br>Cover Nut           | 8        |
| 5  | Piston Keçesi<br>Rod Seal    | 1        | 10 | Yastıklama Burcu<br>Cushion Bush  | 1        | 15 | Yastıklama Cıvatası<br>Cushion Nut    | 2        |

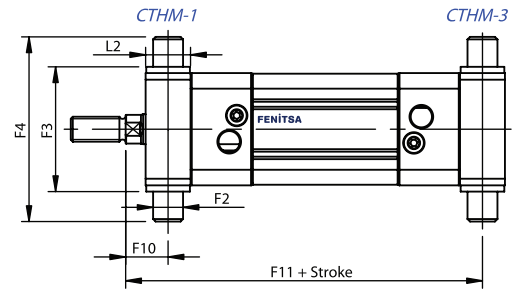


| Silindir/ Cylinder<br>(Ø mm) | A  | B  | C   | D1<br>(Ø) | D2<br>(Ø) | D3<br>(Ø) | D4<br>(Ø) | D5  | D6 | E    | L0    | L1  | L2 | L3 | L4   | 1  | 2 | 3 | ★     |
|------------------------------|----|----|-----|-----------|-----------|-----------|-----------|-----|----|------|-------|-----|----|----|------|----|---|---|-------|
| 32                           | 20 | 30 | 45  | M10x1.25  | 12        | 30        | 46        | 58  | M5 | 32.5 | 114   | 94  | 16 | 4  | 25   | 10 | 3 | 5 | G1/8" |
| 40                           | 24 | 34 | 54  | M12x1.25  | 16        | 35        | 56        | 71  | M5 | 39.6 | 130.5 | 105 | 20 | 4  | 23   | 13 | 3 | 5 | G1/4" |
| 50                           | 32 | 44 | 65  | M16x1.5   | 20        | 40        | 68        | 85  | M6 | 48   | 136   | 106 | 25 | 4  | 23   | 17 | 3 | 6 | G1/4" |
| 63                           | 32 | 44 | 80  | M16x1.5   | 20        | 42        | 84        | 105 | M6 | 59.4 | 149   | 115 | 28 | 4  | 27   | 17 | 3 | 6 | G3/8" |
| 80                           | 40 | 54 | 96  | M20x1.5   | 25        | 48        | 100       | 125 | M8 | 70.7 | 164   | 124 | 34 | 4  | 27,5 | 22 | 3 | 8 | G3/8" |
| 100                          | 40 | 53 | 126 | M20x1.5   | 25        | 52        | 132       | 166 | M8 | 93.4 | 181   | 134 | 40 | 4  | 31,5 | 22 | 3 | 8 | G1/2" |

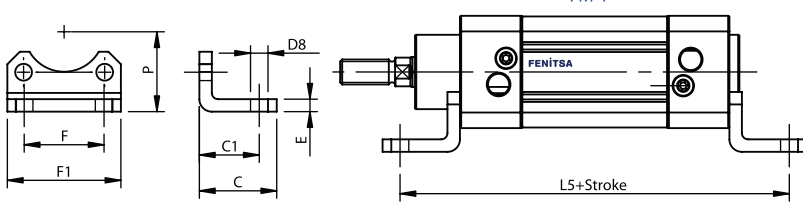
FLM Flange Mounting



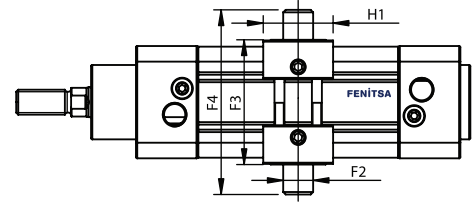
CTHM Central Trunnion Head Mounting



FM Foot Mounting

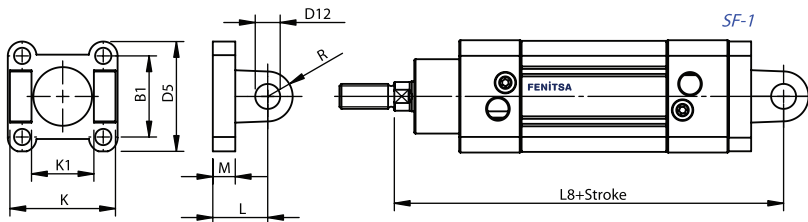


CTM-3 Central Trunnion Mounting

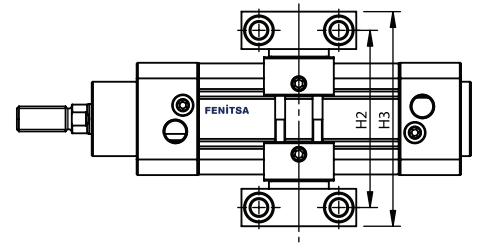


CTM-3 : Adjustable Connection

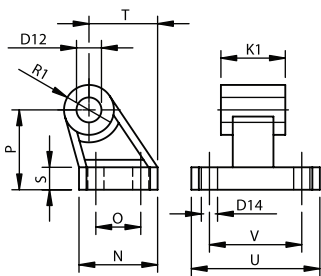
SF Swivel Flange



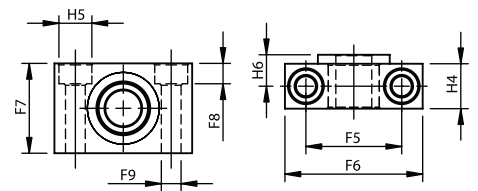
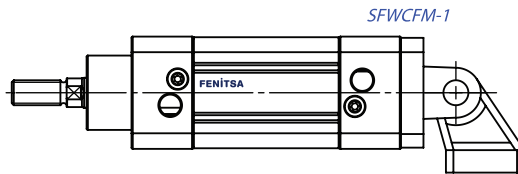
TSM Trunnion Support Mounting



CFM Clevis Foot Mounting



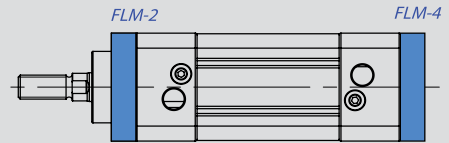
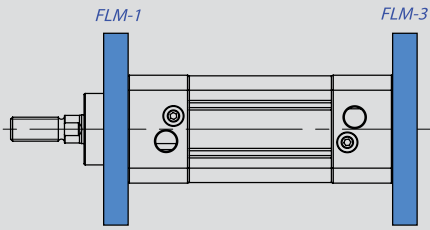
SFWCFM Swivel Flange with Clevis Foot Mounting



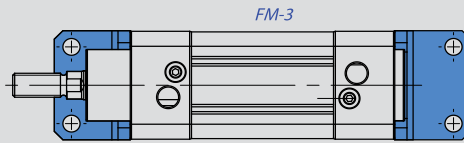
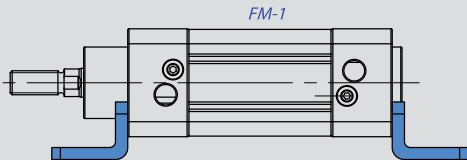
| Cylinder (Ø) mm | B1   | C  | C1 | D3 (Ø) H11 | D5  | D8 (Ø) H14 | D9  | D10 (Ø) H13 | D11 JS14 | D12 (Ø) H9 | D14 (Ø) H13 | E | F JS14 | F1  | F2 (Ø) H9 | F3 H14 | F4  | F5 ±0,2 | F6 | F7 | F8  | F9 (Ø) H13 | F10 | F11 |
|-----------------|------|----|----|------------|-----|------------|-----|-------------|----------|------------|-------------|---|--------|-----|-----------|--------|-----|---------|----|----|-----|------------|-----|-----|
| 32              | 32,5 | 32 | 24 | 30         | 45  | 7          | 77  | 7           | 64       | 10         | 6,6         | 4 | 32     | 45  | 12        | 50     | 74  | 32      | 46 | 30 | 6,8 | 6,6        | 65  | 21  |
| 40              | 39,6 | 38 | 28 | 35         | 54  | 9          | 90  | 9           | 72       | 12         | 6,6         | 5 | 36     | 54  | 16        | 63     | 95  | 36      | 55 | 36 | 9   | 9          | 69  | 24  |
| 50              | 48   | 42 | 32 | 40         | 65  | 9          | 110 | 9           | 90       | 12         | 9           | 6 | 45     | 65  | 16        | 75     | 107 | 36      | 55 | 36 | 9   | 9          | 79  | 28  |
| 63              | 59,4 | 50 | 35 | 42         | 80  | 9          | 125 | 9           | 100      | 16         | 9           | 6 | 50     | 80  | 20        | 90     | 130 | 42      | 65 | 40 | 11  | 11         | 87  | 28  |
| 80              | 70,7 | 60 | 43 | 48         | 96  | 12         | 154 | 12          | 126      | 16         | 11          | 8 | 63     | 96  | 20        | 110    | 150 | 42      | 65 | 40 | 11  | 11         | 98  | 33  |
| 100             | 93,4 | 57 | 43 | 52         | 126 | 14         | 186 | 14          | 150      | 20         | 11          | 8 | 75     | 126 | 25        | 132    | 182 | 50      | 75 | 50 | 13  | 14         | 108 | 38  |

| Cylinder (Ø) mm | H  | H1 -0,2 | H2  | H3  | H4   | H5 (Ø) H13 | H6   | K H14 | K1 H14 | L  | L2  | L5 | L6  | L7  | L8 | M  | N  | O JS14 | P JS16 | R  | R1 | S    | T  | U  | V JS14 |
|-----------------|----|---------|-----|-----|------|------------|------|-------|--------|----|-----|----|-----|-----|----|----|----|--------|--------|----|----|------|----|----|--------|
| 32              | 10 | 15      | 71  | 86  | 15   | 11         | 10,5 | 45    | 26     | 22 | 142 | 16 | 130 | 142 | 8  | 31 | 18 | 32     | 10     | 10 | 8  | 27,5 | 51 | 38 | 38     |
| 40              | 10 | 20      | 87  | 105 | 18   | 15         | 12   | 52    | 28     | 25 | 161 | 20 | 145 | 160 | 9  | 35 | 22 | 36     | 13     | 11 | 10 | 30,5 | 54 | 41 | 41     |
| 50              | 12 | 20      | 99  | 117 | 18   | 15         | 12   | 60    | 32     | 27 | 170 | 25 | 155 | 170 | 11 | 45 | 30 | 45     | 16     | 13 | 12 | 40,5 | 65 | 50 | 50     |
| 63              | 15 | 25      | 116 | 136 | 20   | 18         | 13   | 70    | 40     | 35 | 185 | 25 | 170 | 190 | 12 | 50 | 35 | 50     | 18     | 15 | 12 | 44,5 | 67 | 52 | 52     |
| 80              | 18 | 25      | 136 | 156 | 20   | 18         | 13   | 90    | 50     | 38 | 210 | 30 | 190 | 210 | 14 | 60 | 40 | 63     | 18     | 15 | 14 | 57   | 86 | 66 | 66     |
| 100             | 18 | 30      | 164 | 189 | 24,5 | 20         | 16   | 110   | 60     | 43 | 220 | 35 | 205 | 230 | 15 | 70 | 50 | 71     | 23     | 19 | 15 | 65   | 96 | 76 | 76     |

FLM Flange Mounting



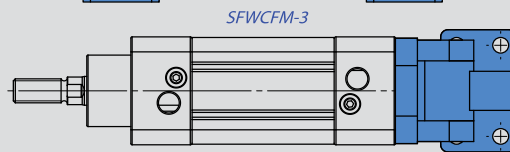
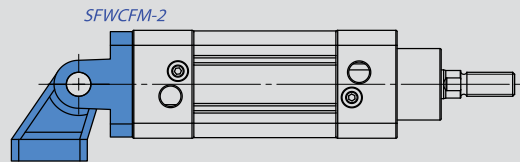
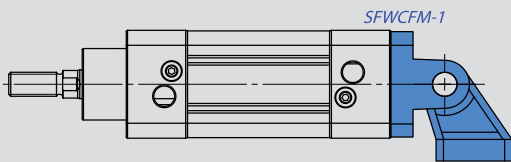
FM Foot Mounting



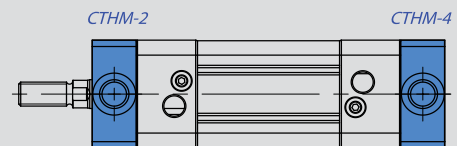
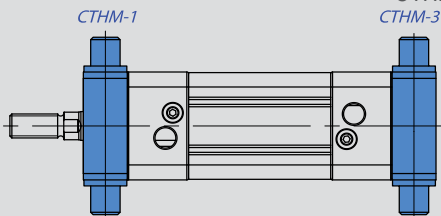
SF Swivel Flange



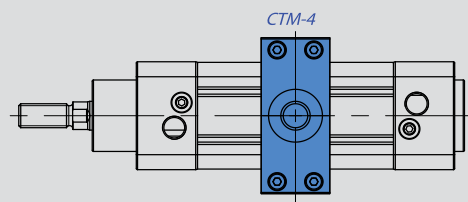
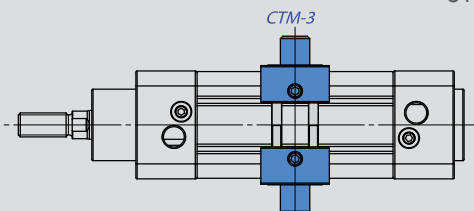
SFWCFM Swivel Flange with Clevis Foot Mounting

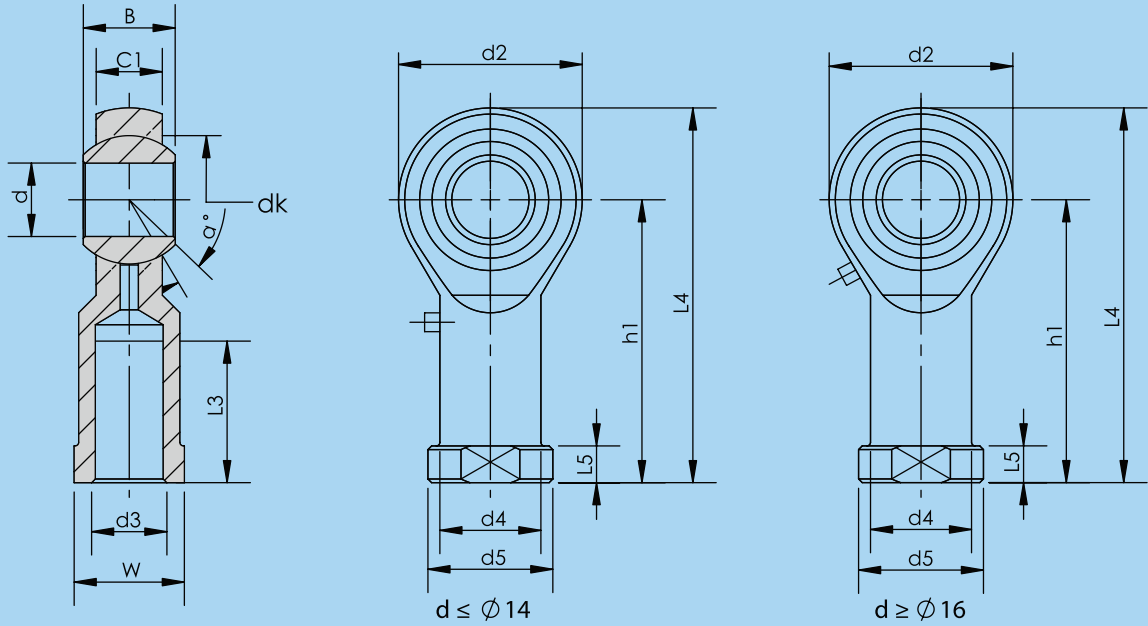


CTHM Central Trunnion Head Mounting

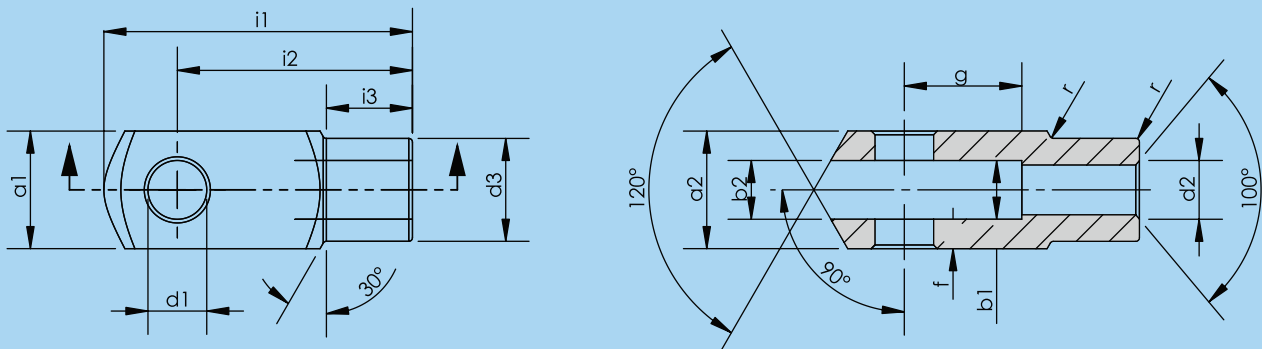


CTM Central Trunnion Mounting





| Part No   | Dimensions (mm) |          |    |      |    |           |    |     |    |     |      |    |        |    |
|-----------|-----------------|----------|----|------|----|-----------|----|-----|----|-----|------|----|--------|----|
|           | d               | d3<br>6H | B  | C1   | W  | L3<br>min | d2 | L4  | h1 | L5  | d4   | d5 | dk     | a° |
| KMB 10 -1 | 10              | M10x1.25 | 14 | 10,5 | 17 | 20        | 26 | 56  | 43 | 6,5 | 15   | 19 | 19,05  | 13 |
| KMB 12 -1 | 12              | M12x1.25 | 16 | 12   | 19 | 22        | 30 | 65  | 50 | 6,5 | 17,5 | 22 | 22,225 | 13 |
| KMB 16 -1 | 16              | M16x1.5  | 21 | 15   | 22 | 28        | 40 | 84  | 64 | 8   | 22   | 27 | 28,575 | 15 |
| KMB 20    | 20              | M20x1.5  | 25 | 18   | 30 | 33        | 50 | 102 | 77 | 10  | 27,5 | 34 | 34,925 | 14 |



| Cylinder<br>(Ø)<br>mm | d1<br>H9 | g<br>±0,5 | a1<br>H11 | a2<br>+0,3<br>-0,16 | b1<br>B13 | b2 | d2<br>6H | d3<br>±0,3 | f<br>±0,2 | i1<br>±0,5 | i2 | i3<br>±0,2 | r   |
|-----------------------|----------|-----------|-----------|---------------------|-----------|----|----------|------------|-----------|------------|----|------------|-----|
| 32                    | 10       | 20        | 20        | 20                  | 10        | 10 | M10x1.25 | 18         | 0,5       | 52         | 40 | 15         | 0,5 |
| 40                    | 12       | 24        | 24        | 24                  | 12        | 12 | M12x1.25 | 20         | 0,5       | 62         | 48 | 18         | 0,5 |
| 50                    | 16       | 32        | 32        | 32                  | 16        | 16 | M16x1.5  | 26         | 1         | 83         | 64 | 24         | 1   |
| 63                    | 16       | 32        | 32        | 32                  | 16        | 16 | M16x1.5  | 26         | 1         | 83         | 64 | 24         | 1   |
| 80                    | 20       | 40        | 40        | 40                  | 20        | 20 | M20x1.5  | 34         | 1,5       | 105        | 80 | 30         | 1,5 |
| 100                   | 20       | 40        | 40        | 40                  | 20        | 20 | M20x1.5  | 34         | 1,5       | 105        | 80 | 30         | 1,5 |