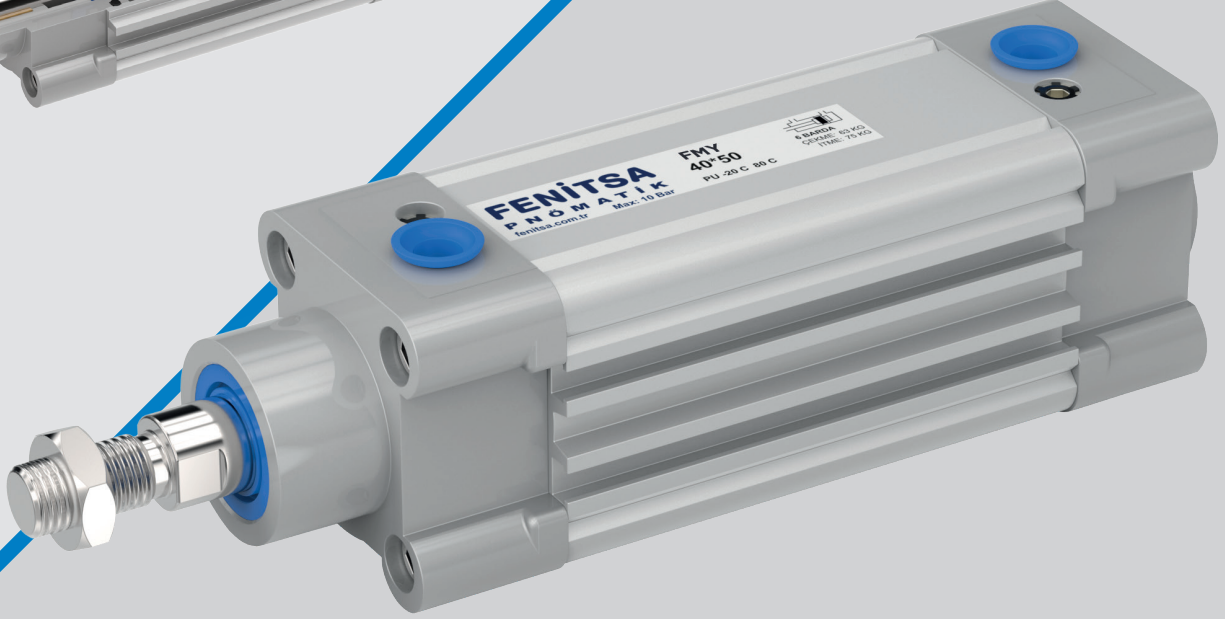
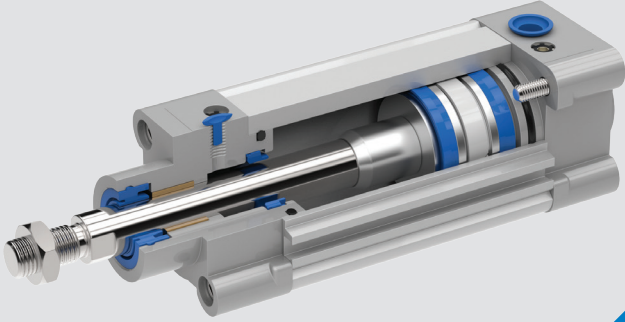


# Iso Pnömatik Manyetik Yastıklı Silindir

## Magnetic Cushion Cylinder

ISO 15552

FMY



### Çalışma Sıcaklığına Göre Keçe Sistemi Seal Choice Depending on the Working Temperature

<b>Poliüretan (PU)</b> <b>Polyurethane (PU)</b>	(-20°C) - (+80°C)	Standart Ürün Standard Seal
<b>Viton (FKM)</b> <b>Viton (FKM)</b>	(-30°C) - (+180°C)	Opsiyon Ürün Optional Seal

Kod / Code	Sembol / Symbol	Model	Açıklama / Description
FMY		Standart Silindir Standard Cylinder	Manyetik Yastıklı Çift Etkili Silindir Magnetic, Cushion, Double Acting
FMYC		Çift Millî Silindir Double Rod Cylinder	Manyetik Yastıklı Çift Millî Çift Etkili Magnetic, Cushion, Double Rod, Double Acting
FMYT		Tandem Silindir Tandem Cylinder	Manyetik Yastıklı Tek Stroklu Tek Millî Çift Etkili Silindir Magnetic, Cushion, Single Stroke, Double Rod, Double Acting
FMYD		İki Pozisyonlu Tandem Silindir Double Position Tandem Cylinder	Manyetik Yastıklı Çift Stroklu Tek Millî Çift Etkili Silindir Magnetic, Cushion, Double Stroke, Single Rod, Double Acting

Not: Tandem Silindirde kuvvet iki kat artar. / Note: Using tandem cylinder doubles cylinder power.

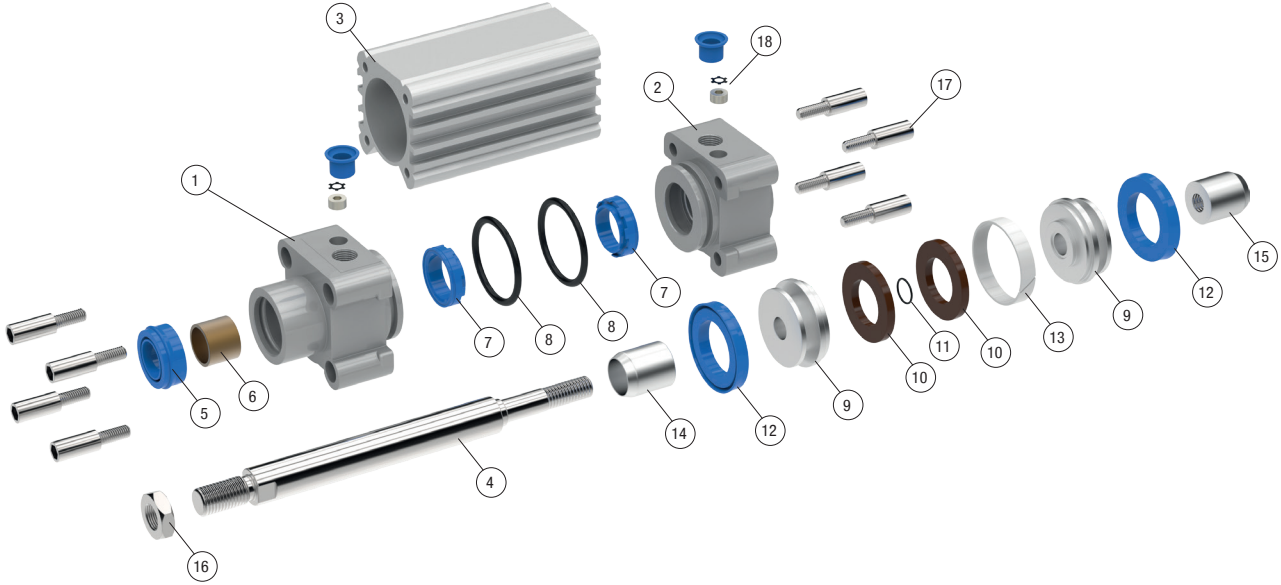
Silindir Cylinder (Ø mm)	Mil Rod (Ø mm)	İtme Kuvveti (kg) Thrust Force (kg) (6 Bar)	Çekme Kuvveti (kg) Traction Force (kg) (6 Bar)
32	12	48	41
40	16	75	63
50	20	118	99
63	20	187	168
80	25	301	272
100	25	471	441

1kg: 10 Newton

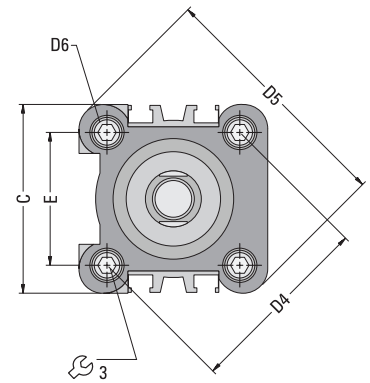
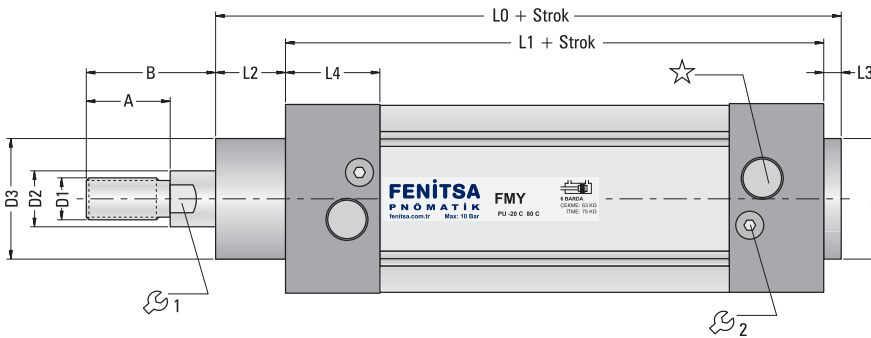
### Genel Özellikler / General Features

<b>Çalışma Şartı</b> Working Condition	Filtre edilmiş ve yağlı hava ile çalışır. Works with filtered and lubricated oil.
<b>Çalışma Basıncı</b> Working Pressure	1.5 / 10 Bar
<b>Silindir Çapları (mm)</b> Diameter (mm)	Ø32-Ø40-Ø50-Ø63-Ø80-Ø100
<b>Strok (mm)</b> Stroke (mm)	50-100-125-160-200-250-300-350-400-450-500

İstenilen strokta üretim yapılmaktadır./We produce at desired stroke..

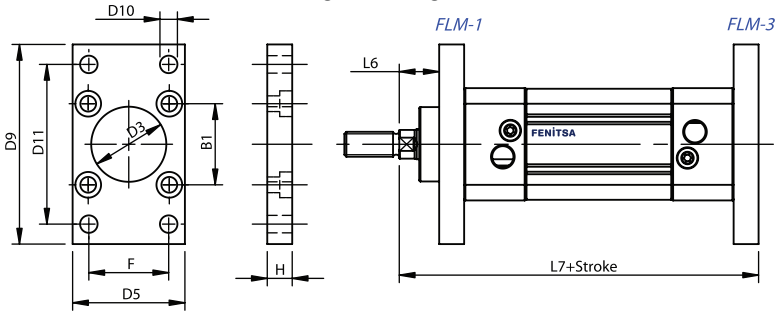


No	Parça Adı / Product Name	Adet/pcs	No	Parça Adı / Product Name	Adet/pcs	No	Parça Adı / Product Name	Adet/pcs
1	Ön Kapak	1	7	Yastıklama Keçesi	2	13	Yataklama Bandı	1
2	Arka Kapak	1	8	Kapak O-ringi	2	14	Yastıklama Burcu	1
3	Boru	1	9	Orta Piston	2	15	Yastıklama Somunu	1
4	Piston Mili	1	10	Miknats	1	16	Mil Ucu Somunu	1
5	Mil Keçesi	1	11	Orta Piston O-ringi	1	17	Kapak Cıvatası	8
6	Yataklama Burcu	1	12	Piston Keçesi	2	18	Yastıklama Cıvatası	2

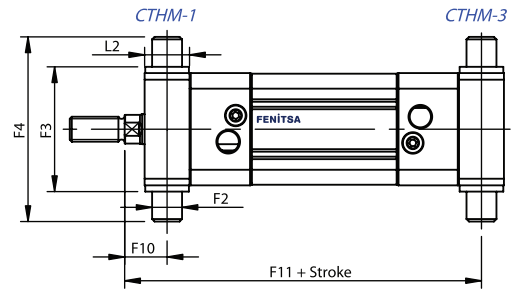


Silindir/ Cylinder (Ø mm)	A	B	C	D1 (Ø)	D2 (Ø)	D3 (Ø)	D4 (Ø)	D5	D6	E	L0	L1	L2	L3	L4	1	2	3	☆
32	22	30	44	M10x1.25	12	30	46	59	M6	32.5	116	94	18	4	25	10	3	6	G1/8"
40	24	34	55	M12x1.25	16	35	53.7	70.2	M6	38	129	105	20	4	27	13	3	6	G1/4"
50	32	41	64.5	M16x1.5	20	40	65.7	84.2	M8	46.5	138	106	28	4	29.5	17	3	8	G1/4"
63	32	42	75.5	M16x1.5	20	45	80	99.5	M8	56.5	152	121	27	4	34.5	17	3	8	G3/8"
80	40	52	93.5	M20x1.5	25	45	101.8	123.8	M10	72	167	128	34	4	35	22	3	10	G3/8"
100	40	52,5	111	M20x1.5	25	55	125.9	148.8	M10	89	182.5	138	38.5	4	38	22	3	10	G1/2"

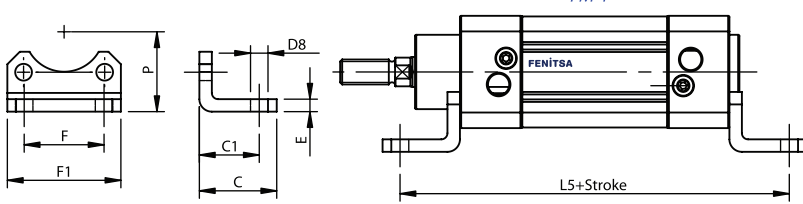
FLM Flange Mounting



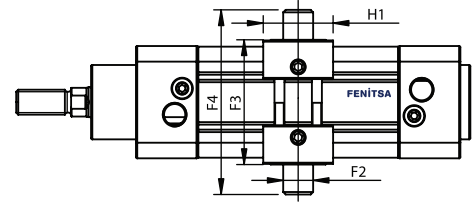
CTHM Central Trunnion Head Mounting



FM Foot Mounting

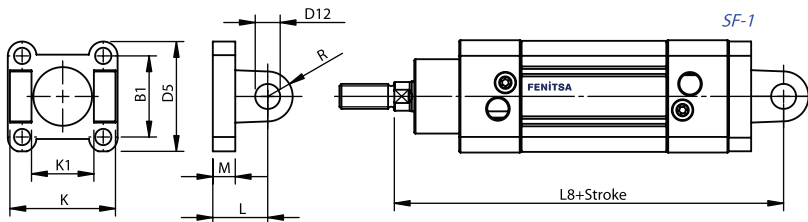


CTM-3 Central Trunnion Mounting

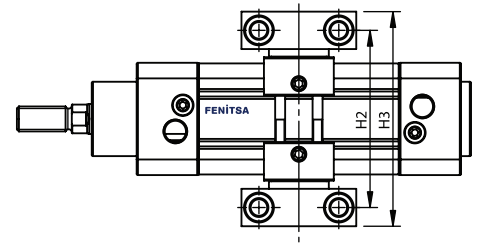


CTM-3 : Adjustable Connection

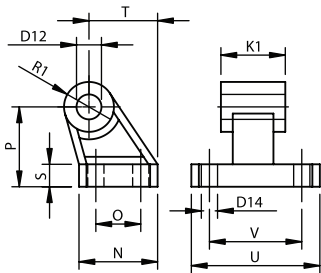
SF Swivel Flange



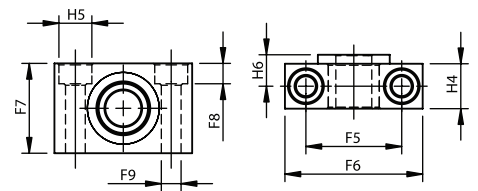
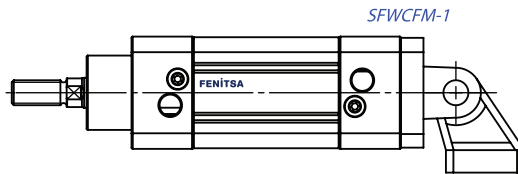
TSM Trunnion Support Mounting



CFM Clevis Foot Mounting



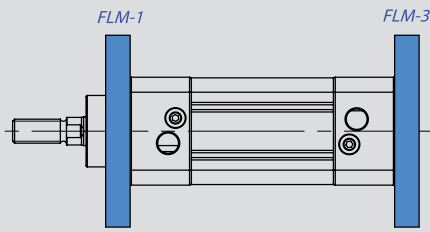
SFWCFM Swivel Flange with Clevis Foot Mounting



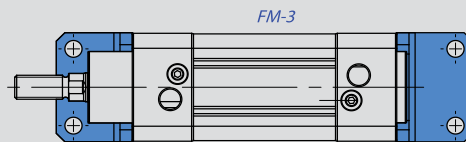
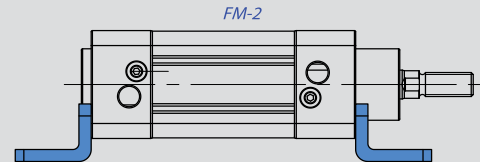
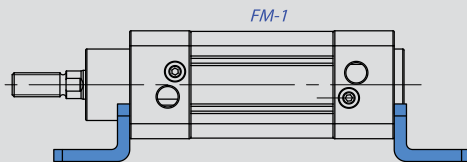
Cylinder (Ø) mm	B1	C	C1	D3 (Ø) H11	D5	D8 (Ø) H14	D9	D10 (Ø) H13	D11 JS14	D12 (Ø) H9	D14 (Ø) H13	E	F JS14	F1	F2 (Ø) H9	F3 H14	F4	F5 ±0,2	F6	F7	F8	F9 (Ø) H13	F10	F11
32	32,5	30	24	30	45	7	80	7	64	10	6,6	5	32	45,5	12	50	74	32	46	30	6,8	6,6	17	129
40	38	37	28	35	54	10	90	9	72	12	6,6	5	36	54,5	16	63	95	36	55	36	9	9	20	145
50	46,5	41	32	40	65	10	110	9	90	12	9	6	45	65	16	75	107	36	55	36	9	9	23	157
63	56,5	44	32	45	76	10	120	9	100	16	9	6	50	76	20	90	130	42	65	40	11	11	23,5	171,5
80	72	56	41	45	94	12	150	12	126	16	11	6	63	94	20	110	150	42	65	40	11	11	29	191
100	89	58	41	55	112	14	175	14	150	20	11	6	75	112	25	132	182	50	75	50	13	14	31,8	208,3

Cylinder (Ø) mm	H	H1 -0,2	H2	H3	H4	H5 (Ø) H13	H6	K H14	K1 H14	L	L2	L5	L6	L7	L8	M	N	O JS14	P JS16	R	R1	S	T	U	V JS14
32	10	28	71	86	15	11	10,5	45	26	22	18	142	16	130	142	9	31	18	32	10	10	8	27,5	51	38
40	10	28	87	105	18	15	12	52	28	25	20	161	20	145	160	9	35	22	36	12	11	10	30,5	54	41
50	12	34	99	117	18	15	12	60	32	27	28	170	25	155	170	11	45	30	45	13	13	12	40,5	65	50
63	12	34	116	136	20	18	13	70	40	32	27	185	25	170	190	11	50	35	50	16	15	12	44,5	67	52
80	16	34	136	156	20	18	13	90	50	36	34	210	30	190	210	14	60	40	63	16	15	14	57	86	66
100	16	44	164	189	24,5	20	16	110	60	41	38,5	220	35	205	230	14	70	50	71	20	19	15	65	96	76

FLM Flange Mounting



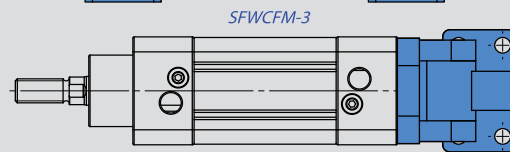
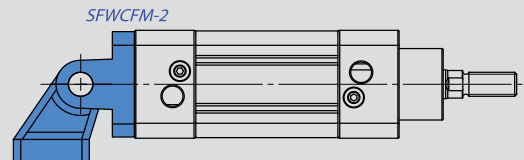
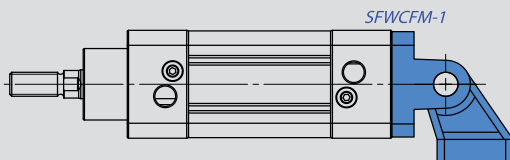
FM Foot Mounting



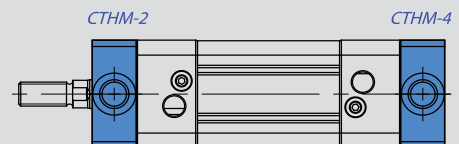
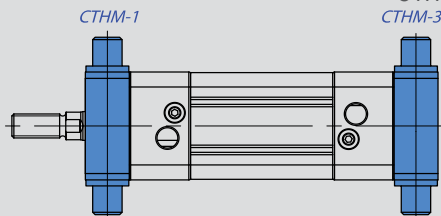
SF Swivel Flange



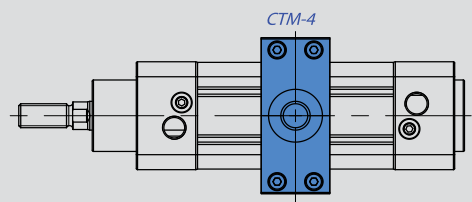
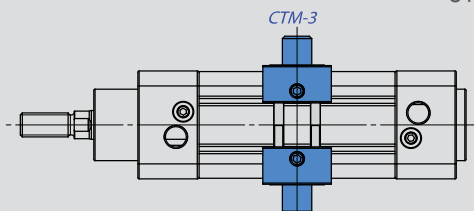
SFWCFM Swivel Flange with Clevis Foot Mounting

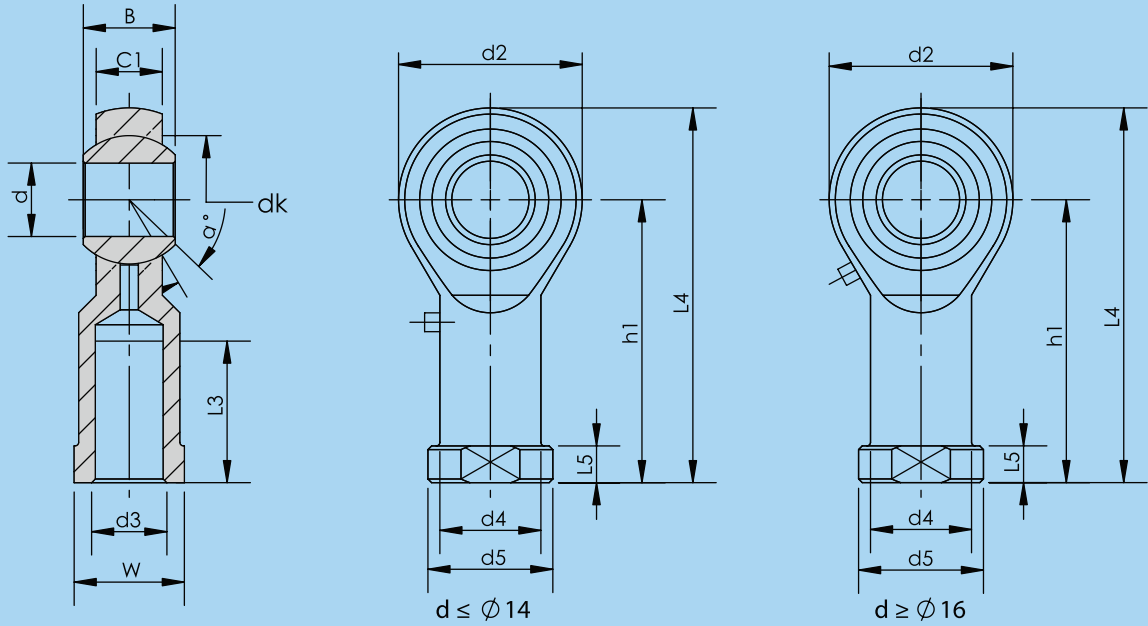


CTHM Central Trunnion Head Mounting

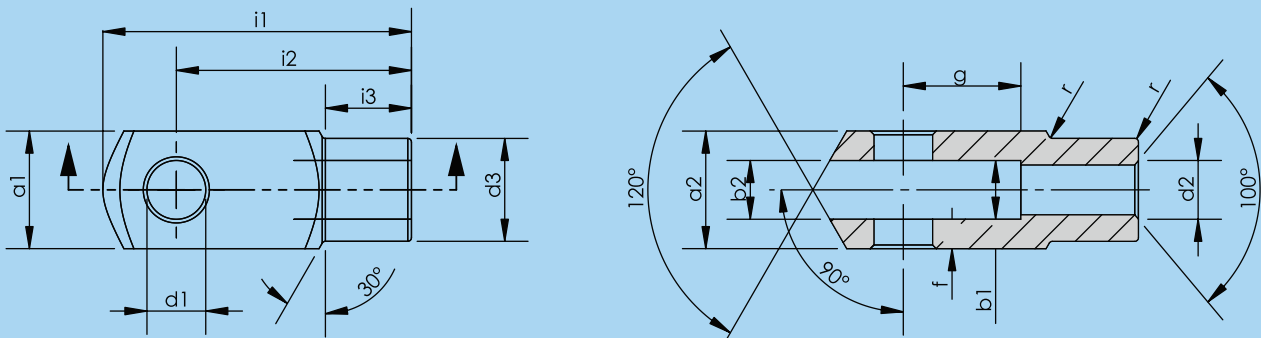


CTM Central Trunnion Mounting





Part No	Dimensions (mm)													
	d	d3 6H	B	C1	W	L3 min	d2	L4	h1	L5	d4	d5	dk	a°
KMB 10 -1	10	M10x1,25	14	10,5	17	20	26	56	43	6,5	15	19	19,05	13
KMB 12 -1	12	M12x1,25	16	12	19	22	30	65	50	6,5	17,5	22	22,225	13
KMB 16 -1	16	M16x1,5	21	15	22	28	40	84	64	8	22	27	28,575	15
KMB 20	20	M20x1,5	25	18	30	33	50	102	77	10	27,5	34	34,925	14
KMB 28	28	M27x2,0	35	24	41	48	66	136	103	14	37	46	47,6	15
KMB 30-1	30	M27x2,0	37	25	41	51	70	145	110	15	40	50	50,8	17
KMB 30	30	M30x2,0	37	25	41	51	70	145	110	15	40	50	50,8	17



Cylinder (Ø) mm	d1 H9	g ±0,5	a1 H11	a2 +0,3 -0,16	b1 B13	b2	d2 6H	d3 ±0,3	f ±0,2	i1 ±0,5	i2	i3 ±0,2	r
32	10	20	20	20	10	10	M10x1,25	18	05	52	40	15	05
40	12	24	24	24	12	12	M12x1,25	20	05	62	48	18	05
50	16	32	32	32	16	16	M16x1,5	26	1	83	64	24	1
63	16	32	32	32	16	16	M16x1,5	26	1	83	64	24	1
80	20	40	40	40	20	20	M20x1,5	34	15	105	80	30	15
100	20	40	40	40	20	20	M20x1,5	34	15	105	80	30	15