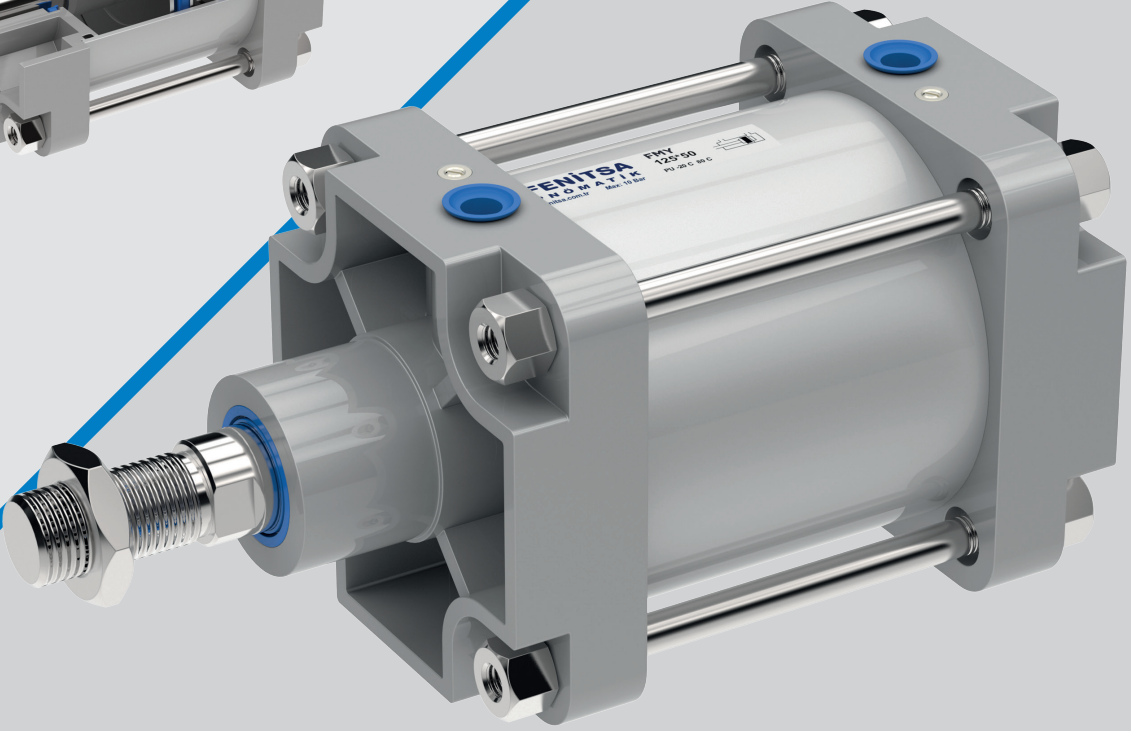
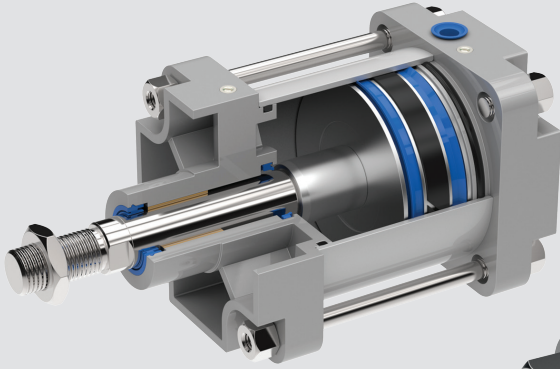


İso Pnömatik Manyetik Yastıklı Silindir

Magnetic Cushion Cylinder

ISO 15552

FMY



Çalışma Sıcaklığına Göre Keçe Sistemi Seal Choice Depending on the Working Temperature

Poliüretan (PU) Polyurethane (PU)	(-20°C) - (+80°C)	Standart Ürün Standard Seal
Viton (FKM) Viton (FKM)	(-30°C) - (+180°C)	Opsiyon Ürün Optional Seal

Kod / Code	Sembol / Symbol	Model	Açıklama / Description
FMY		Standart Silindir Standard Cylinder	Manyetik Yastıklı Çift Etkili Silindir Magnetic, Cushion, Double Acting
FMYC		Çift Millî Silindir Double Rod Cylinder	Manyetik Yastıklı Çift Millî Çift Etkili Magnetic, Cushion, Double Rod, Double Acting
FMYT		Tandem Silindir Tandem Cylinder	Manyetik Yastıklı Tek Stroklu Tek Millî Çift Etkili Silindir Magnetic, Cushion, Single Stroke, Double Rod, Double Acting
FMYD		İki Pozisyonlu Tandem Silindir Double Position Tandem Cylinder	Manyetik Yastıklı Çift Stroklu Çift Millî Çift Etkili Silindir Magnetic, Cushion, Double Stroke, Double Rod, Double Acting

Not: Tandem Silindirde kuvvet iki kat artar. / Note: Using tandem cylinder doubles cylinder power.

Silindir Cylinder (Ø mm)	Mil Rod (Ø mm)	İtme Kuvveti (kg) Thrust Force (kg) (6 Bar)	Çekme Kuvveti (kg) Traction Force (kg) (6 Bar)
125	32	735	688
160	40	1206	1111
200	40	1884	1789
250	50	2944	2827
320	63	4823	4638

1kg: 10 Newton

Genel Özellikler / General Features

Çalışma Şartı Working Condition

 Filtre edilmiş ve yağlı hava ile çalışır.
Works with filtered and lubricated oil.

Çalışma Basıncı Working Pressure

1.5 / 10 Bar

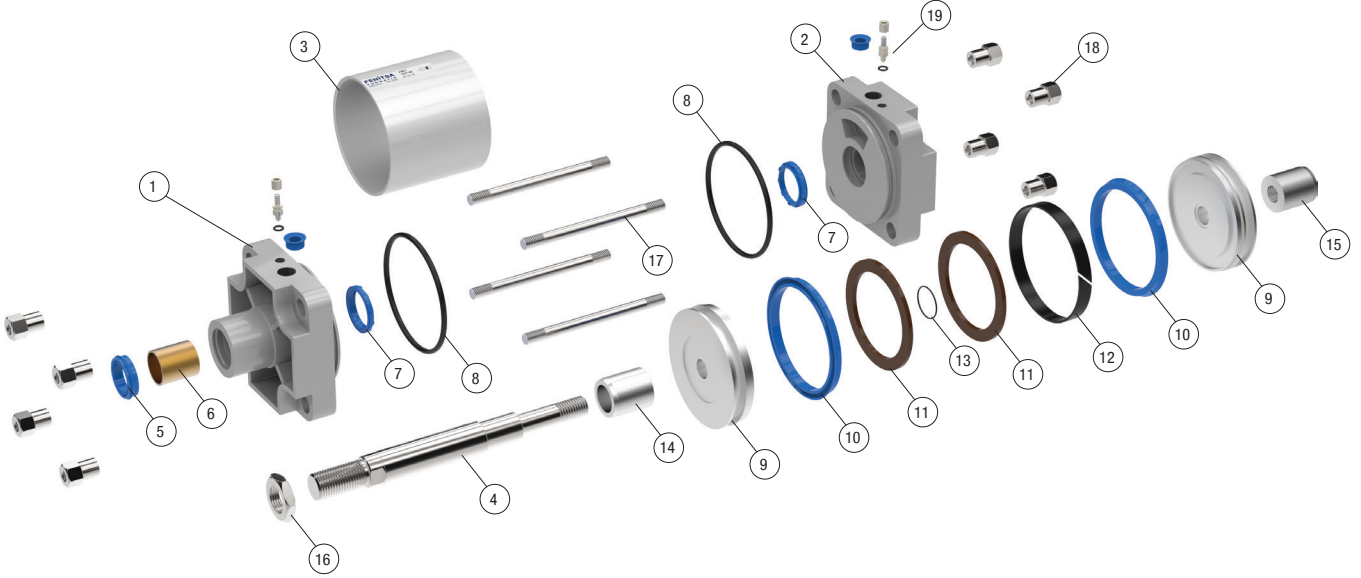
Silindir Çapları (mm) Diameter (mm)

Ø125-Ø160-Ø200 -Ø250-Ø320

Strok (mm) Stroke (mm)

50-100-125-160-200-250-300-350-400-450-500

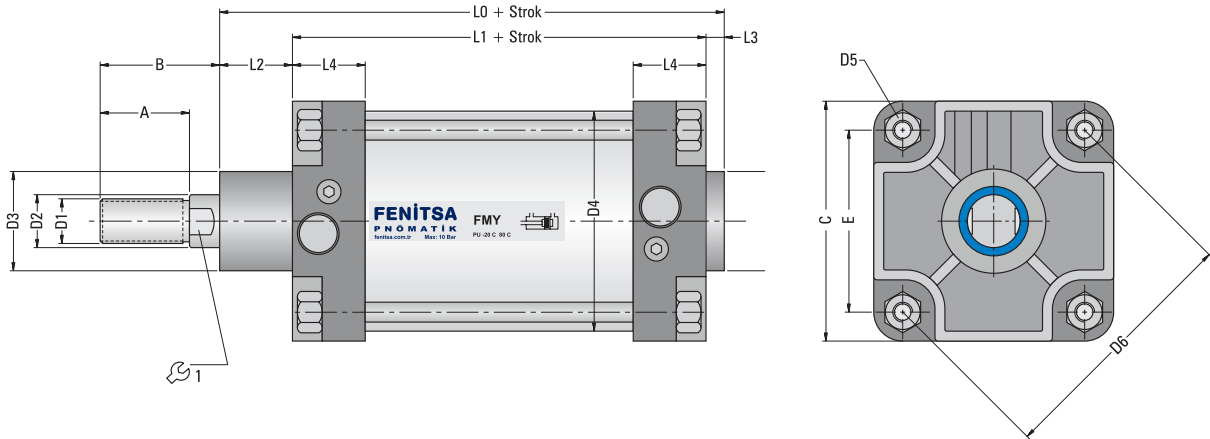
İstenilen strokta üretim yapılmaktadır./We produce at desired stroke..



No	Parça Adı / Product Name	Adet/pcs
1	Ön Kapak Front End Cover	1
2	Arka Kapak Rear End Cover	1
3	Boru Tube	1
4	Piston Mili Piston Rod	1
5	Mil Keçesi Rod Seal	1
6	Yataklama Burcu Guiding Band	1
7	Yastıklama Keçesi Cushion Seal	2

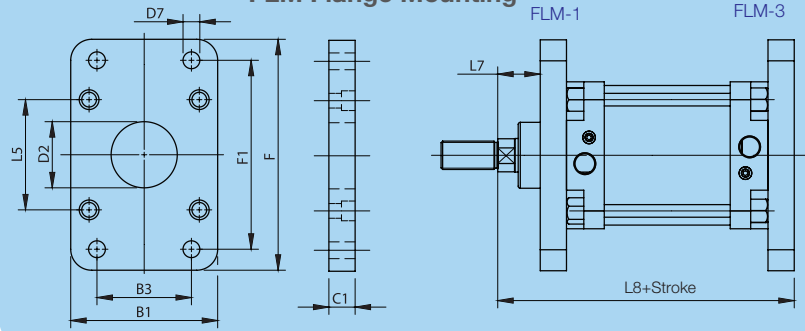
No	Parça Adı / Product Name	Adet/pcs
8	Kapak O-ringi Cover O-Ring	2
9	Orta Piston Orta Piston	2
10	Piston Keçesi Piston Seal	2
11	Miknatis Magnet	1
12	Yataklama Bandı Yataklama Bandı	1
13	Orta Piston O-ringi Rod O-Ring	1
14	Yastıklama Burcu Cushion Bush	1

No	Parça Adı / Product Name	Adet/pcs
15	Yastıklama Somunu Cushion Nut	1
16	Mil Ucu Somunu Rod Nut	1
17	Saplama Stud	4
18	Saplama Somunu Stud Nut	8
19	Yastıklama Civatası Cushion Nut	2

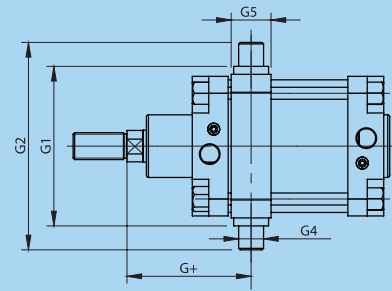


Silindir/ Cylinder (Ø mm)	A	B	C	D1 (Ø)	D2 (Ø)	D3 (Ø)	D4 (Ø)	D5	D6	E	L0	L1	L2	L3	L4	1 ↻	★
125	54	73	145	M27x2	32	60	133	M12	155.5	110	213	160	46	6	44	27	G1/2"
160	72	97	186	M36x2	40	65	170	M16	198	140	243	180	55	6	47	36	G3/4"
200	72	102	220	M36x2	40	75	210	M16	247.5	175	253	180	65	6	47	36	G3/4"
250	84	122	270	M42x2	50	90	262	M20	311.1	220	281	200	69	10	51	46	G1"
320	96	134	340	M48x2	63	110	336	M24	381.8	270	314	220	82	10	56	55	G1"

FLM Flange Mounting

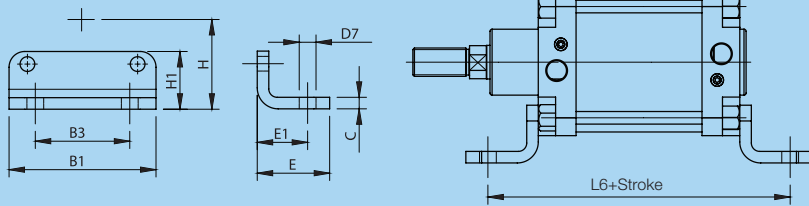


CTM-1 Central Trunnion Mounting

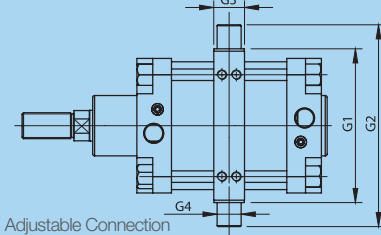


CTM-1 : Fixed Connection

FM Foot Mounting

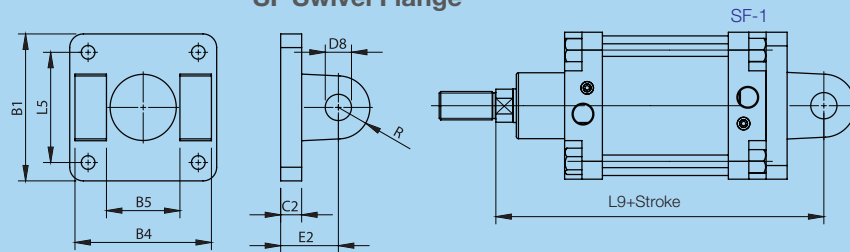


CTM-3 Central Trunnion Mounting

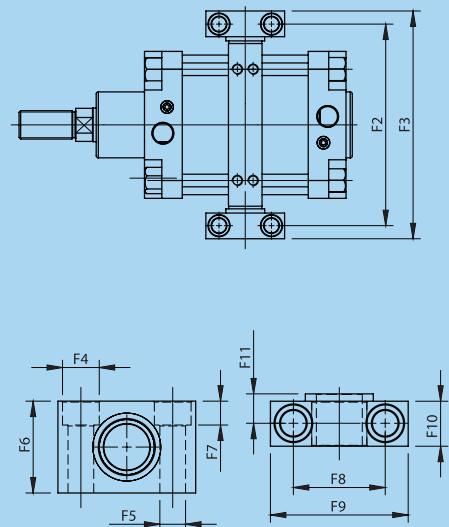


CTM-3 : Adjustable Connection

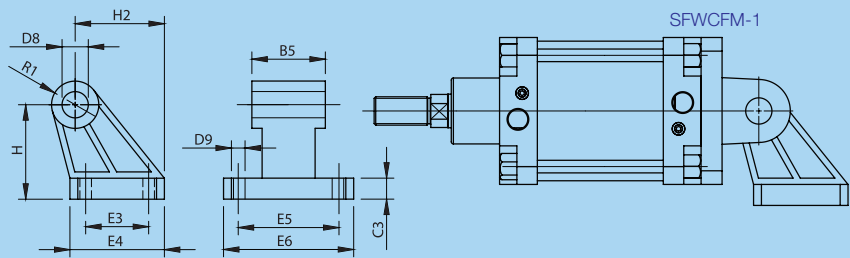
SF Swivel Flange



TSM Trunnion Support Mounting



CFM Clevis Foot Mounting

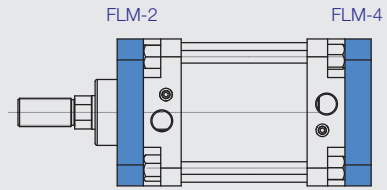
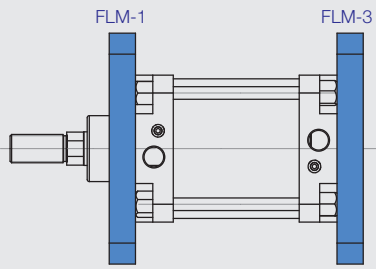


SFWCFM Swivel Flange with Clevis Foot Mounting

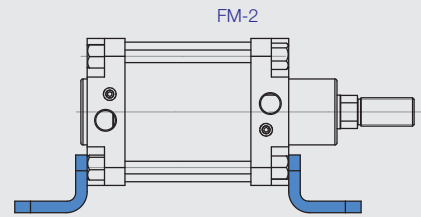
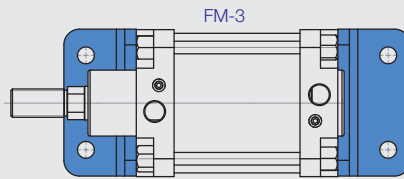
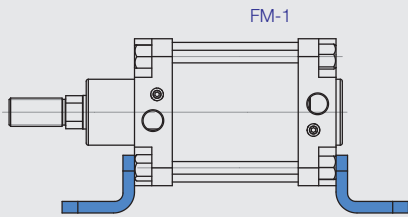
Cylinder (∅) mm	B1	B3	B4	B5	C	C1	C2	C3	D2 (∅) H11	D7 (∅) H13	D8 (∅) H9	D9 (∅) H13	E	E1	E2	E3	E4	E5	E6	F	F1	F2	F3	F4 (∅) H13
125	145	90	130	70	8	20	20	20	60	16	25	14	67	45	50	60	90	94	124	220	180	192	217	20
160	186	115	170	90	9	20	20	25	65	18	30	14	87	60	55	88	126	118	156	280	230	245	280	26
200	220	135	170	90	12	25	25	30	75	22	30	18	95	70	60	90	130	122	162	320	270	295	330	26
250	270	165	200	110	20	25	25	35	90	26	40	22	105	75	70	110	160	150	200	390	330	375	420	33
320	340	200	220	120	23	30	30	40	110	33	45	26	125	85	80	122	186	170	234	470	400	465	520	40

Cylinder (∅) mm	F5 (∅) H13	F6	F7	F8	F9	F10	F11	G1	G2	G3	G4 (∅) e9	G5	G+	H	H1	H2	L5	L6	L7	L8	L9	R	R1	
125	14	50	13	50	±0,3	75	24,5	16	160	210	32	25	38	128	90	55	85	110	250	45	245	275	30	22,5
160	18	60	17	60	92	36	22,5	200	264	40	32	48	151	115	70	116	140	300	60	280	315	32	31,5	
200	18	60	17	60	92	36	22,5	250	314	40	32	48	166	135	80	125	175	320	70	300	335	35	31,5	
250	22	70	21,5	90	140	45	27,5	320	400	50	40	60	189	165	100	153	220	350	80	330	375	45	40	
320	26	80	25,5	100	150	55	32,5	400	500	60	50	65	210	200	120	182	270	390	90	370	420	54	45	

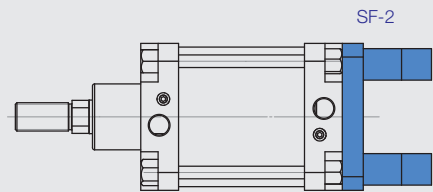
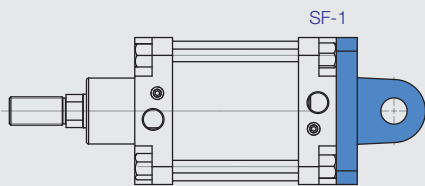
FLM Flange Mounting



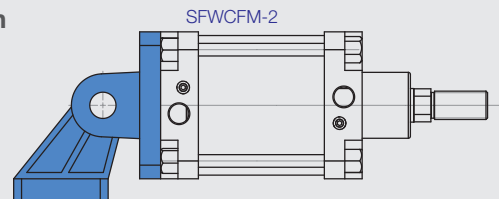
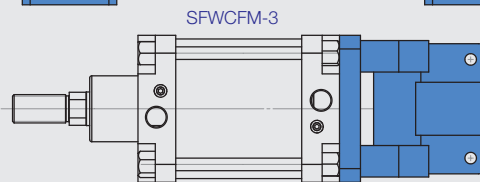
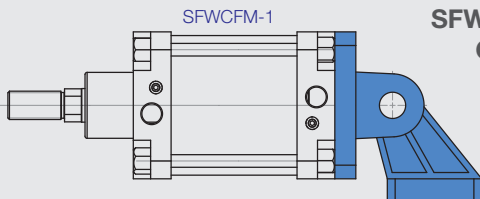
FM Foot Mounting



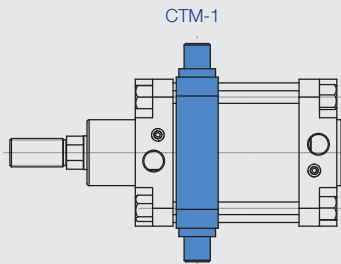
SF Swivel Flange



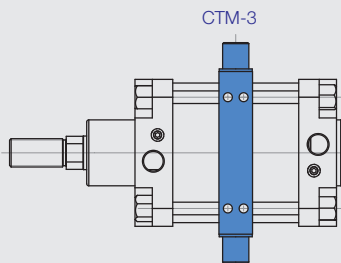
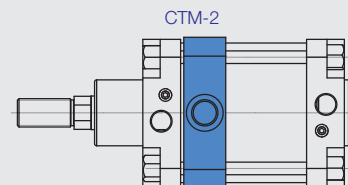
SFWCFM Swivel Flange with Clevis Foot Mounting



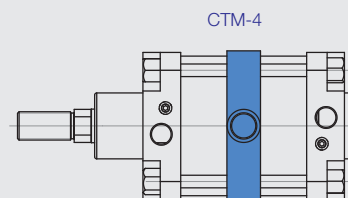
CTM Central Trunnion Mounting

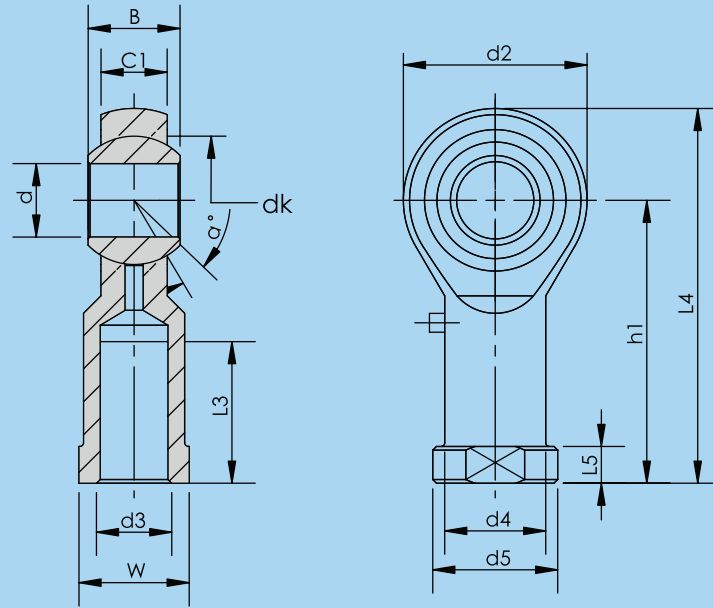


CTM-1-2
Fixed Connection

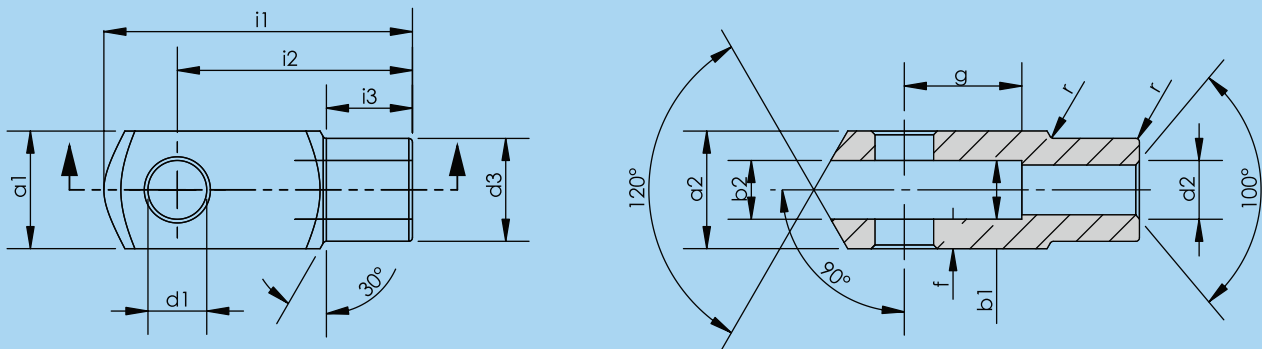


CTM-3-4
Adjustable Connection





Part No	Dimensions (mm)													
	d	d3 6H	B	C1	W	L3 min	d2	L4	h1	L5	d4	d5	dk	α°
KMB 28	28	M27x2.0	35	24	41	48	66	136	103	14	37	46	47,6	15
KMB 30-1	30	M27x2.0	37	25	41	51	70	145	110	15	40	50	50,8	17
KMB 30	30	M30x2.0	37	25	41	51	70	145	110	15	40	50	50,8	17
KMB 35	35	M36x2.0	43	28	50	56	81	165,5	125	17	46	58	57,1	16
KMB 35 UK	35	M36x3.0	25	21	50	60	82	166	125	15	47	58	47	6
KMB 40 UK	40	M39x3.0	28	23	55	65	92	188	142	18	52	65	53	7
KMB 40	40	M42x2.0	49	33	55	60	91	187,5	142	19	53	65	66,6	17
KMB 50 UK	50	M45x3.0	35	30	65	68	112	216	160	20	62	75	66	6
KMB 50	50	M48x2.0	60	45	65	65	117	218,5	160	23	65	75	82,5	12



Cylinder (\emptyset) mm	d1 H9	g $\pm 0,5$	a1 H11	a2 $+0,3$ $-0,16$	b1 B13	b2	d2 6H	d3 $\pm 0,3$	f $\pm 0,2$	i1 $\pm 0,5$	i2	i3 $\pm 0,2$	r
125	25	50	50	50	25	25	M27x2	42	1,5	132	100	36	1,5
160	35	72	70	70	35	35	M36x2	60	2	188	144	41	2
200	35	72	70	70	35	35	M36x2	60	2	188	144	41	2
250	40	96	80	80	40	40	M42x2	70	3	220	168	43	3
320	50	111	90	90	50	50	M48x2	80	3	250	192	44	3